



June 3, 2008

### Area Quick Facts:

#### NC Civilian Labor Force April 2008 Seasonally Adjusted

Labor Force	4,555,309
Employed	4,310,425
Unemployed	244,884
Rate	5.4

\*\*\*\*\*

#### Duration of Unemployment Insurance Benefits (Weeks) For 12 Months Ending April\*

	2008	2007
Cleveland	12.6	13.0
McDowell	10.0	9.1
Polk	11.7	9.1
Rutherford	11.6	13.1

\*Duration is the number of weeks compensated for the year divided by the number of first payments.

\*\*\*\*\*

#### NC Average Weekly Benefit Amount April 2008 \$273.80

#### NC Maximum Weekly Unemployment Insurance Benefit Amount \$476

\*\*\*\*\*

#### New Corporations\*

	April 2008	April 2007
Cleveland	19	9
McDowell	6	5
Polk	16	8
Rutherford	23	19

\*Source: NC Department of the Secretary of State.

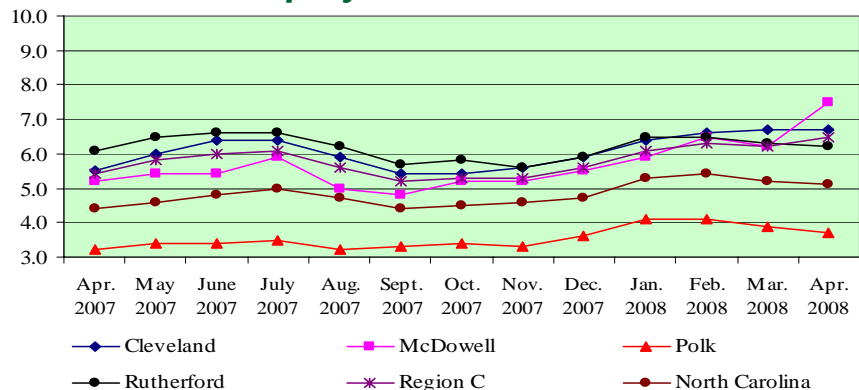
### Civilian Labor Force Estimates\*

		April 2008	March 2008	April 2007
<b>Cleveland</b>	Labor Force	50,368	49,883	49,768
	Employed	46,973	46,519	47,036
	Unemployed	3,395	3,364	2,732
	Rate %	6.7	6.7	5.5
<b>McDowell</b>	Labor Force	22,041	21,588	21,667
	Employed	20,398	20,235	20,549
	Unemployed	1,643	1,353	1,118
	Rate %	7.5	6.3	5.2
<b>Polk</b>	Labor Force	9,781	9,882	9,792
	Employed	9,416	9,498	9,477
	Unemployed	365	384	315
	Rate %	3.7	3.9	3.2
<b>Rutherford</b>	Labor Force	30,100	29,850	30,573
	Employed	28,224	27,968	28,698
	Unemployed	1,876	1,882	1,875
	Rate %	6.2	6.3	6.1
<b>Region C</b>	Labor Force	112,290	111,061	111,800
	Employed	105,011	104,148	105,760
	Unemployed	7,279	6,913	6,040
	Rate %	6.5	6.2	5.4
<b>NC</b>	Labor Force	4,532,994	4,519,042	4,489,133
	Employed	4,300,452	4,280,356	4,291,769
	Unemployed	232,542	238,686	197,364
	Rate %	5.1	5.3	4.4

\*May 2008 area/county estimates will be released on June 27, 2008.

Note: When comparing area/county data to state data, use not seasonally adjusted state data as in this chart. County April 2008 data are preliminary, March 2008 data are revised and 2007 data are benchmarked. State 2007 data are also benchmarked.

### Unemployment Rate Trends



**Total Wages  
For Quarter Ending September 30, 2007**

	Cleveland	McDowell	Polk	Rutherford
<b>Federal Government</b>	\$2,232,740	\$921,979	\$424,703	\$1,197,642
<b>State Government</b>	\$7,706,851	\$7,343,755	\$562,323	\$4,298,908
<b>Local Government</b>	\$34,643,627	\$11,217,839	\$5,731,266	\$21,046,361
<b>Private Industry</b>	\$219,405,853	\$94,991,400	\$30,717,347	\$135,246,618
<b>Total All Industries</b>	\$263,989,071	\$114,474,973	\$37,435,639	\$161,789,529

**Unemployment Insurance  
Claims — April 2008**

**Gender and Age of Individuals Filing  
Initial Claims — April 2008**

	Initial Claims	Benefits Paid		Cleveland	McDowell	Polk	Rutherford
<b>Cleveland</b>	1,066	\$1,384,036	<b>Female</b>	37%	40%	36%	32%
<b>McDowell</b>	1,004	\$794,650	<b>Male</b>	63%	60%	64%	68%
<b>Polk</b>	81	\$101,941	<b>16 — 19</b>	1%	2%	0%	2%
<b>Rutherford</b>	799	\$665,580	<b>20 — 24</b>	9%	6%	4%	8%
<b>Statewide</b>	60,107	\$93,384,427	<b>25 — 34</b>	25%	20%	13%	25%
			<b>35 — 44</b>	25%	28%	27%	28%
			<b>45 — 54</b>	24%	27%	29%	21%
			<b>55 — 64</b>	14%	15%	27%	14%
			<b>65 +</b>	2%	2%	0%	2%

**Total Registered Applicants Active Anytime From 7/1/2007 - 4/30/08\*\***

Occupation	Cleveland	McDowell	Polk	Rutherford
Professional, Technical & Managerial	1,273	577	121	733
Clerical	1,472	530	86	874
Sales	418	184	33	232
Domestic Services	49	9	*	26
Other Services	1,715	873	100	1,330
Agriculture, Forestry & Fishery	98	64	11	78
Processing	412	142	20	368
Machine Trade	1,387	694	99	985
Benchwork	606	333	27	377
Structural Work	1,158	485	74	592
Motor Freight & Transportation	314	139	25	178
Packaging & Material Handling	1,669	461	85	926
Miscellaneous	56	26	5	29

\*\*Program Year 7/1/2007 - 6/30/2008 \*Number suppressed

**Prepared by: Labor Market Information, Employment Security Commission of North Carolina**  
**P.O. Box 25903 Raleigh, NC 27611**  
**Phone: 919-733-2936 Fax: 919-733-8662**  
**E-mail: [esc.Imi.inquiries@ncmail.net](mailto:esc.Imi.inquiries@ncmail.net) Web site: [www.ncesc.com](http://www.ncesc.com)**