



August 8, 2008

Area Quick Facts:

NC Civilian Labor Force June 2008 Seasonally Adjusted

Labor Force	4,560,566
Employed	4,288,946
Unemployed	271,620
Rate	6.0

Duration of Unemployment Insurance Benefits (Weeks) For 12 Months Ending June*

	2008	2007
Cleveland	13.2	12.5
McDowell	9.7	9.3
Polk	12.4	9.3
Rutherford	11.2	12.6

*Duration is the number of weeks compensated for the year divided by the number of first payments.

NC Average Weekly Benefit Amount June 2008 \$277.55

NC Maximum Weekly Unemployment Insurance Benefit Amount \$476

New Corporations*

	June 2008	June 2007
Cleveland	25	26
McDowell	5	16
Polk	16	8
Rutherford	10	28

*Source: NC Department of the Secretary of State.

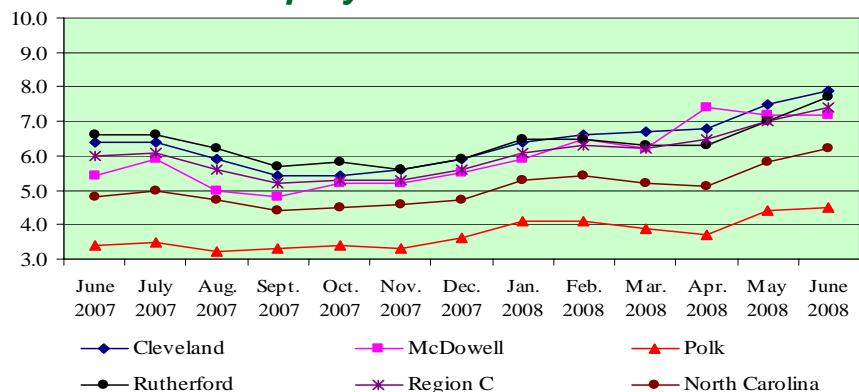
Civilian Labor Force Estimates*

		June 2008	May 2008	June 2007
Cleveland	Labor Force	51,012	50,619	50,470
	Employed	46,962	46,801	47,263
	Unemployed	4,050	3,818	3,207
	Rate %	7.9	7.5	6.4
McDowell	Labor Force	22,123	21,981	22,044
	Employed	20,538	20,401	20,857
	Unemployed	1,585	1,580	1,187
	Rate %	7.2	7.2	5.4
Polk	Labor Force	9,946	9,868	9,994
	Employed	9,496	9,433	9,654
	Unemployed	450	435	340
	Rate %	4.5	4.4	3.4
Rutherford	Labor Force	30,794	30,381	31,149
	Employed	28,423	28,265	29,101
	Unemployed	2,371	2,116	2,048
	Rate %	7.7	7.0	6.6
Region C	Labor Force	113,875	112,849	113,657
	Employed	105,419	104,900	106,875
	Unemployed	8,456	7,949	6,782
	Rate %	7.4	7.0	6.0
NC	Labor Force	4,600,680	4,561,933	4,556,893
	Employed	4,316,715	4,297,274	4,336,243
	Unemployed	283,965	264,659	220,650
	Rate %	6.2	5.8	4.8

*July 2008 area/county estimates will be released on August 22, 2008.

Note: When comparing area/county data to state data, use not seasonally adjusted state data as in this chart. County June 2008 data are preliminary, May 2008 data are revised and 2007 data are benchmarked. State 2007 data are also benchmarked.

Unemployment Rate Trends



**Total Wages
For Quarter Ending December 31, 2008**

	Cleveland	McDowell	Polk	Rutherford
Federal Government	\$2,545,904	\$1,011,251	\$475,539	\$1,418,753
State Government	\$8,302,373	\$7,349,332	\$615,415	\$4,790,849
Local Government	\$39,816,335	\$13,774,230	\$6,761,535	\$23,002,003
Private Industry	\$243,078,507	\$101,628,641	\$31,045,293	\$142,133,863
Total All Industries	\$293,743,119	\$123,763,454	\$38,897,782	\$171,345,468

**Unemployment Insurance
Claims — June 2008**

	Initial Claims	Benefits Paid
Cleveland	1,191	\$1,628,742
McDowell	556	\$602,354
Polk	99	\$106,547
Rutherford	753	\$765,166
Statewide	55,310	\$89,907,021

**Gender and Age of Individuals Filing
Initial Claims — June 2008**

	Cleveland	McDowell	Polk	Rutherford
Female	41%	43%	38%	34%
Male	59%	57%	62%	66%
16 — 19	1%	2%	1%	1%
20 — 24	8%	8%	1%	8%
25 — 34	20%	22%	19%	23%
35 — 44	27%	34%	22%	28%
45 — 54	28%	19%	24%	26%
55 — 64	14%	12%	27%	12%
65 +	2%	3%	6%	2%

Total Registered Applicants Active Anytime From 7/1/2007 - 6/30/08**

Occupation	Cleveland	McDowell	Polk	Rutherford
Professional, Technical & Managerial	1,357	631	125	766
Clerical	1,530	567	85	925
Sales	427	200	39	255
Domestic Services	58	15	4	29
Other Services	1,819	928	111	1,398
Agriculture, Forestry & Fishery	101	62	11	84
Processing	415	150	20	386
Machine Trade	1,389	741	100	1,026
Benchwork	638	339	28	378
Structural Work	1,200	509	80	620
Motor Freight & Transportation	318	151	24	178
Packaging & Material Handling	1,740	495	92	984
Miscellaneous	57	31	6	27

**Program Year 7/1/2007 - 6/30/2008 *Number suppressed

Prepared by: Labor Market Information, Employment Security Commission of North Carolina
P.O. Box 25903 Raleigh, NC 27611
Phone: 919-733-2936 Fax: 919-733-8662
E-mail: esc.Imi.inquiries@ncmail.net Web site: www.ncesc.com