



April 8, 2010

Area Quick Facts:

**NC Civilian Labor Force
February 2010
Seasonally Adjusted**

Labor Force 4,549,508
Employed 4,038,734
Unemployed 510,774
Rate 11.2

**Duration of Unemployment
Insurance Benefits (Weeks)
For 12 Months Ending
February***

	2010	2009
Cleveland	18.4	12.4
McDowell	18.7	11.3
Polk	17.6	12.5
Rutherford	18.2	11.2

*Duration is the number of weeks compensated for the year divided by the number of first payments.

**NC Average Weekly
Benefit Amount
February 2010
\$290.84**

**NC Maximum Weekly
Unemployment Insurance
Benefit Amount \$505
as of Aug. 1, 2009**

New Corporations*

	Feb. 2010	Feb. 2009
Cleveland	17	18
McDowell	8	5
Polk	11	7
Rutherford	18	17

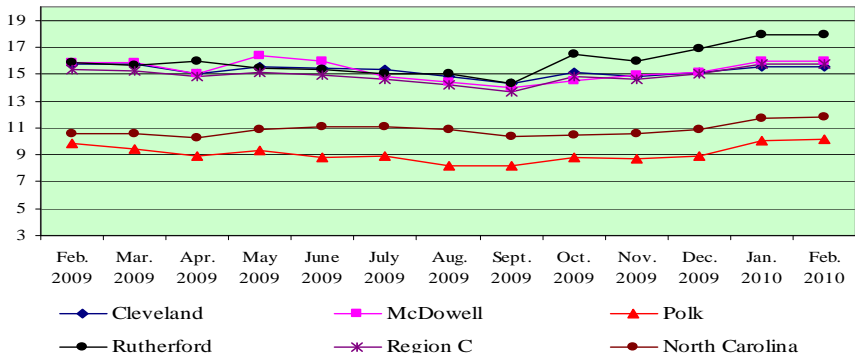
*Source: NC Department of the Secretary of State.

Civilian Labor Force Estimates*

		February 2010	January 2010	February 2009
Cleveland	Labor Force	49,002	48,935	51,563
	Employed	41,408	41,364	43,474
	Unemployed	7,594	7,571	8,089
	Rate %	15.5	15.5	15.7
McDowell	Labor Force	20,109	20,173	21,726
	Employed	16,884	16,953	18,276
	Unemployed	3,225	3,220	3,450
	Rate %	16.0	16.0	15.9
Polk	Labor Force	9,612	9,560	9,754
	Employed	8,629	8,597	8,796
	Unemployed	983	963	958
	Rate %	10.2	10.1	9.8
Rutherford	Labor Force	28,319	28,409	31,148
	Employed	23,242	23,311	26,196
	Unemployed	5,077	5,098	4,952
	Rate %	17.9	17.9	15.9
Region C	Labor Force	107,042	107,077	114,191
	Employed	90,163	90,225	96,742
	Unemployed	16,879	16,852	17,449
	Rate %	15.8	15.7	15.3
NC	Labor Force	4,527,935	4,521,839	4,559,066
	Employed	3,991,949	3,990,558	4,075,484
	Unemployed	535,986	531,281	483,582
	Rate %	11.8	11.7	10.6

Note: When comparing area/county data to state data, use not seasonally adjusted state data as in this chart. February 2010 data are preliminary, while January 2010 are revised. February 2009 county data are revised, while February 2009 state data are benchmarked.

Unemployment Rate Trends



Total Wages for 3rd Quarter 2009

	Cleveland	McDowell	Polk	Rutherford
Federal Government	\$2,176,724	\$885,965	\$411,267	\$1,185,760
State Government	\$7,708,994	\$6,883,915	\$584,854	\$5,060,396
Local Government	\$35,135,017	\$10,165,667	\$5,377,906	\$20,453,472
Private Industry	\$187,692,609	\$81,668,096	\$27,388,497	\$103,871,777
Total All Industries	\$232,713,344	\$99,603,643	\$33,762,524	\$130,571,405

Unemployment Insurance Claims — February 2010

	Initial Claims	Benefits Paid
Cleveland	1,217	\$2,603,091
McDowell	461	\$1,128,261
Polk	170	\$299,542
Rutherford	645	\$1,846,713
Statewide	76,208	\$211,943,497

Gender and Age of Individuals Filing Initial Claims — February 2010

	Cleveland	McDowell	Polk	Rutherford
Female	38%	27%	38%	35%
Male	62%	73%	62%	65%
16—19	2%	2%	1%	2%
20—24	8%	8%	9%	7%
25—34	22%	23%	15%	21%
35—44	25%	26%	30%	26%
45—54	28%	21%	23%	25%
55—64	13%	16%	19%	17%
65 +	2%	4%	3%	2%

Total Registered Applicants Active Anytime From 7/1/2009 - 12/31/09**

Occupation	Cleveland	McDowell	Polk	Rutherford
Professional, Technical & Managerial	1,726	714	198	1,073
Clerical	1,574	512	108	854
Sales	461	191	55	307
Domestic Services	56	16	6	26
Other Services	1,714	685	139	1,228
Agriculture, Forestry & Fishery	84	64	24	98
Processing	454	155	30	439
Machine Trade	1,573	914	114	1,179
Benchwork	670	341	32	420
Structural Work	1,553	666	180	919
Motor Freight & Transportation	389	163	24	216
Packaging & Material Handling	1,573	487	62	922
Miscellaneous	96	22	4	34

**Program Year 7/1/2009 - 6/30/2010 *Number suppressed

Prepared by: Labor Market Information, Employment Security Commission of North Carolina
P.O. Box 25903 Raleigh, NC 27611
Phone: 919-733-2936 Fax: 919-733-8662