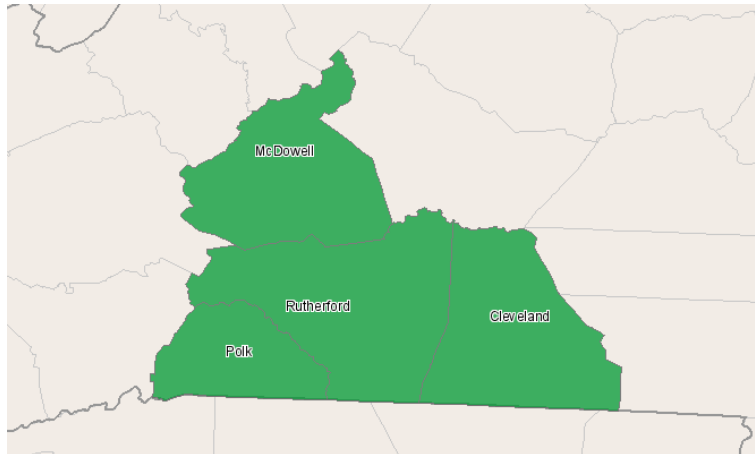


Region C WDB

111 West Court St.
Rutherfordton, North Carolina 28139
828.287.2281

Highest Ranked Occupations Report



Region Info

Region: Region C

Description: Workforce Development Region

County Areas: Cleveland, North Carolina (37045), McDowell, North Carolina (37111), Polk, North Carolina (37149), Rutherford, North Carolina (37161)

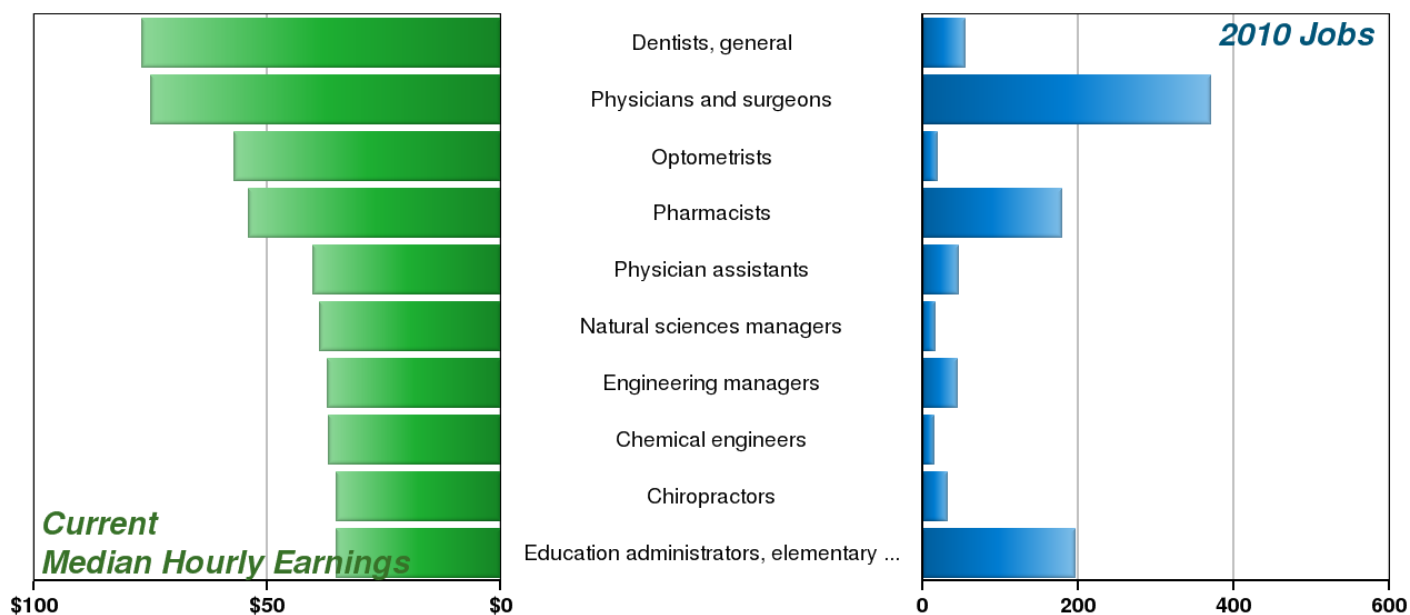
Largest Occupations



SOC Code	Description	2010 Jobs	2015 Jobs	Change	% Change	Current Median Hourly Earnings
41-2031	Retail salespersons	2,671	2,846	175	7%	\$9.68
31-1011	Home health aides	2,605	3,327	722	28%	\$9.34
35-3021	Combined food preparation and serving workers, including fast food	2,150	2,305	155	7%	\$7.31
41-2011	Cashiers, except gaming	1,981	2,034	53	3%	\$7.69
37-2012	Maids and housekeeping cleaners	1,876	2,150	274	15%	\$7.50
41-1011	First-line supervisors/managers of retail sales workers	1,874	1,995	121	6%	\$14.19
29-1111	Registered nurses	1,659	1,855	196	12%	\$25.43
53-7062	Laborers and freight, stock, and material movers, hand	1,471	1,547	76	5%	\$9.38
43-6014	Secretaries, except legal, medical, and executive	1,400	1,450	50	4%	\$10.97
43-9061	Office clerks, general	1,353	1,452	99	7%	\$9.51
35-3031	Waiters and waitresses	1,351	1,406	55	4%	\$7.43
37-2011	Janitors and cleaners, except maids and housekeeping cleaners	1,204	1,291	87	7%	\$8.42
25-9041	Teacher assistants	1,176	1,260	84	7%	\$11.02
11-9012	Farmers and ranchers	1,170	1,044	-126	-11%	\$7.49
25-2021	Elementary school teachers, except special education	1,163	1,281	118	10%	\$23.89
39-9011	Child care workers	1,146	1,286	140	12%	\$7.52
47-2031	Carpenters	1,144	1,316	172	15%	\$13.81
43-3031	Bookkeeping, accounting, and auditing clerks	1,103	1,169	66	6%	\$11.71
53-3032	Truck drivers, heavy and tractor-trailer	1,092	1,198	106	10%	\$17.49
49-9042	Maintenance and repair workers, general	1,061	1,087	26	2%	\$14.15

Source: EMSI Complete Employment - 1st Quarter 2010

Highest Paying Occupations

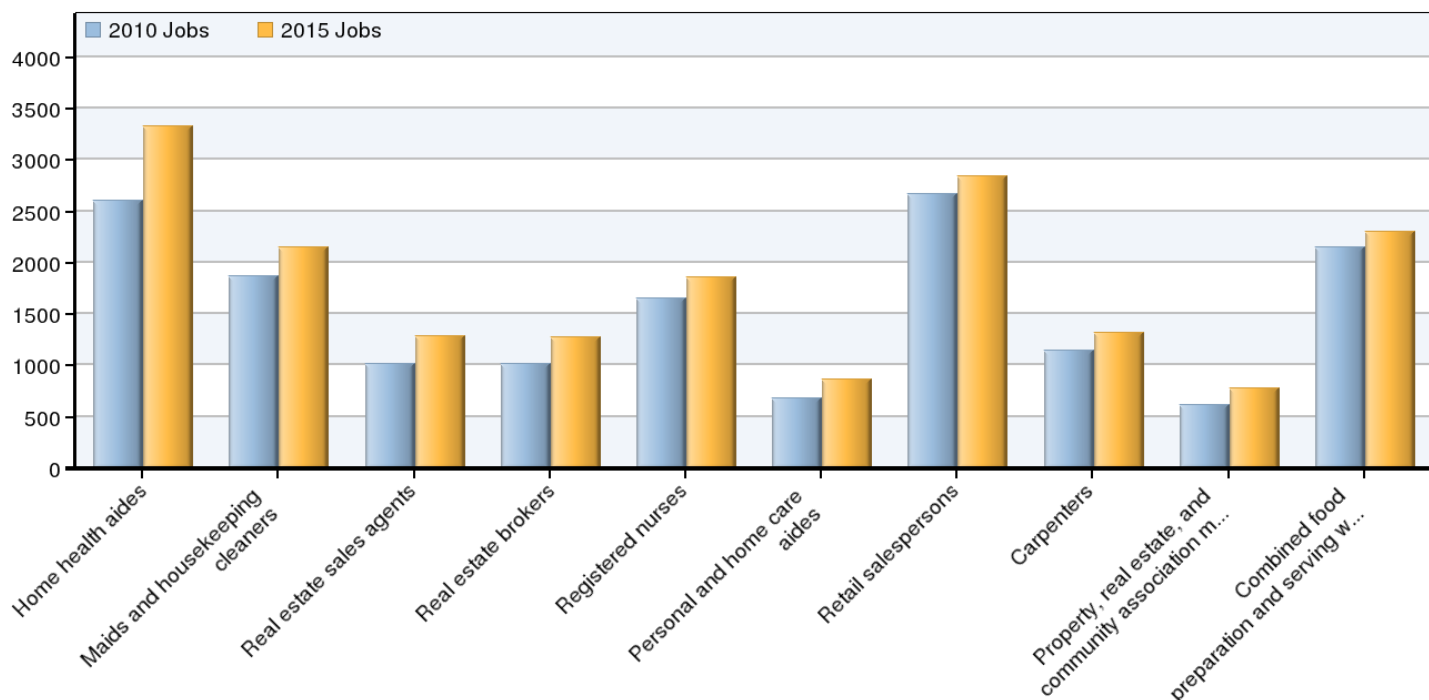


SOC Code	Description	2010 Jobs	2015 Jobs	Change	% Change	Current Median Hourly Earnings
29-1021	Dentists, general	54	60	6	11%	\$76.88
29-1069	Physicians and surgeons	370	402	32	9%	\$74.88
29-1041	Optometrists	19	25	6	32%	\$57.22
29-1051	Pharmacists	178	213	35	20%	\$54.17
29-1071	Physician assistants	46	54	8	17%	\$40.22
11-9121	Natural sciences managers	15	13	-2	-13%	\$38.75
11-9041	Engineering managers	44	43	-1	-2%	\$37.05
17-2041	Chemical engineers	14	11	-3	-21%	\$36.99
29-1011	Chiropractors	32	39	7	22%	\$35.30
11-9032	Education administrators, elementary and secondary school	196	210	14	7%	\$35.26
11-3051	Industrial production managers	147	123	-24	-16%	\$33.76
29-1131	Veterinarians	36	37	1	3%	\$33.07
11-1021	General and operations managers	932	948	16	2%	\$32.63
11-2022	Sales managers	168	179	11	7%	\$31.70
29-1123	Physical therapists	130	164	34	26%	\$31.65
17-2111	Health and safety engineers, except mining safety engineers and inspectors	11	11	0	0%	\$31.61
29-1122	Occupational therapists	59	73	14	24%	\$31.60
11-3021	Computer and information systems managers	92	112	20	22%	\$30.43
11-9111	Medical and health services managers	205	225	20	10%	\$29.99
17-2141	Mechanical engineers	72	71	-1	-1%	\$29.85

Source: EMSI Complete Employment - 1st Quarter 2010

*Note: Occupations with fewer than 10 employees are not shown.

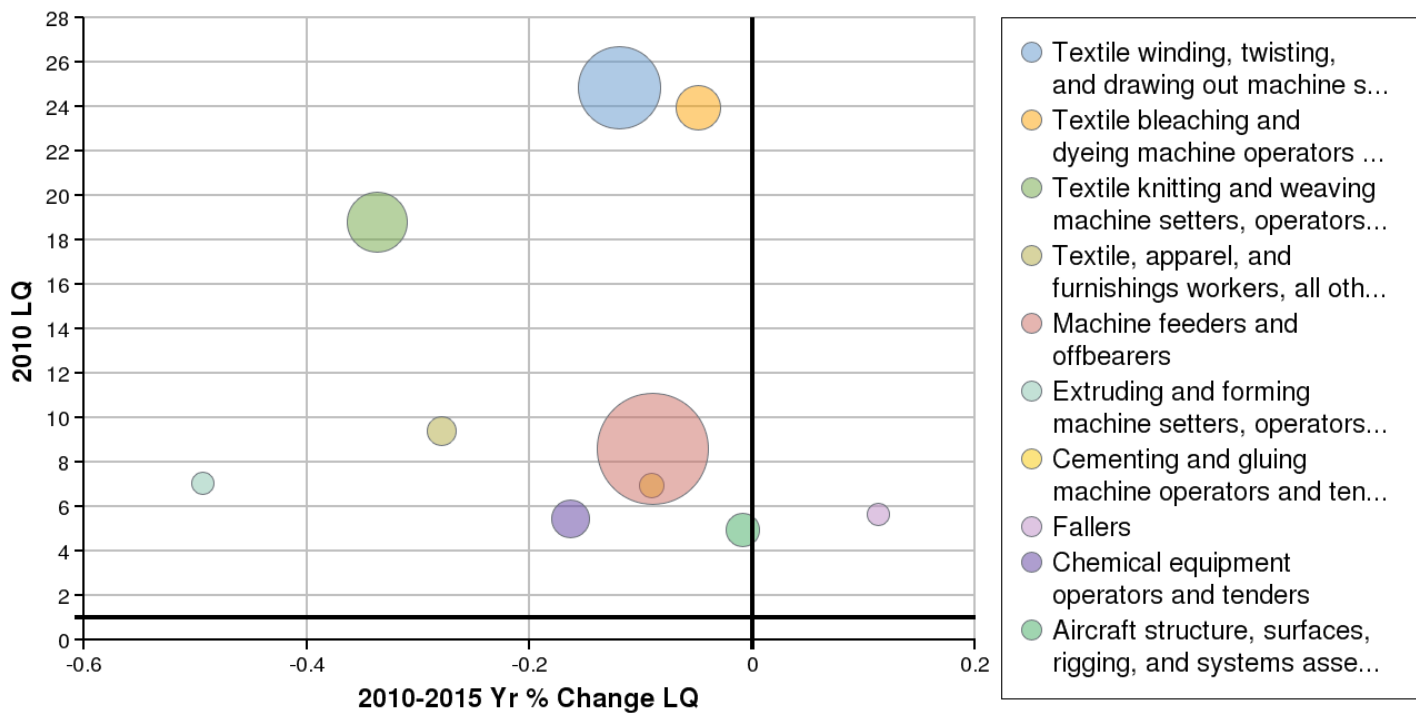
Fastest Growing Occupations



SOC Code	Description	2010 Jobs	2015 Jobs	Growth	Growth %	Current Median Hourly Earnings
31-1011	Home health aides	2,605	3,327	722	28%	\$9.34
37-2012	Maids and housekeeping cleaners	1,876	2,150	274	15%	\$7.50
41-9022	Real estate sales agents	1,019	1,281	262	26%	\$7.59
41-9021	Real estate brokers	1,015	1,273	258	25%	\$7.40
29-1111	Registered nurses	1,659	1,855	196	12%	\$25.43
39-9021	Personal and home care aides	677	867	190	28%	\$8.30
41-2031	Retail salespersons	2,671	2,846	175	7%	\$9.68
47-2031	Carpenters	1,144	1,316	172	15%	\$13.81
11-9141	Property, real estate, and community association managers	617	776	159	26%	\$7.79
35-3021	Combined food preparation and serving workers, including fast food	2,150	2,305	155	7%	\$7.31
47-2061	Construction laborers	800	944	144	18%	\$11.76
39-9011	Child care workers	1,146	1,286	140	12%	\$7.52
11-9199	Managers, all other	891	1,013	122	14%	\$11.68
41-1011	First-line supervisors/managers of retail sales workers	1,874	1,995	121	6%	\$14.19
47-1011	First-line supervisors/managers of construction trades and extraction workers	744	864	120	16%	\$16.57
25-2021	Elementary school teachers, except special education	1,163	1,281	118	10%	\$23.89
37-2019	Building cleaning workers, all other	485	596	111	23%	\$7.28
53-3032	Truck drivers, heavy and tractor-trailer	1,092	1,198	106	10%	\$17.49
25-1099	Postsecondary teachers	923	1,022	99	11%	\$27.67
43-9061	Office clerks, general	1,353	1,452	99	7%	\$9.51

Source: EMSI Complete Employment - 1st Quarter 2010

Top Occupation Location Quotients



SOC Code	Description	2010 Jobs	2015 Jobs	% Change	2010 LQ	2015 LQ	% Change LQ	Current Median Hourly Earnings
51-6064	Textile winding, twisting, and drawing out machine setters, operators, and tenders	403	258	-36%	24.83	21.87	-12%	\$12.36
51-6061	Textile bleaching and dyeing machine operators and tenders	189	120	-37%	23.97	22.81	-5%	\$13.36
51-6063	Textile knitting and weaving machine setters, operators, and tenders	268	128	-52%	18.80	12.48	-34%	\$12.66
51-6099	Textile, apparel, and furnishings workers, all other	92	61	-34%	9.39	6.77	-28%	\$10.36
53-7063	Machine feeders and offbearers	557	439	-21%	8.60	7.83	-9%	\$11.33

51-6091	Extruding and forming machine setters, operators, and tenders, synthetic and glass fibers	56	23	-59%	7.06	3.58	-49%	\$18.19
51-9191	Cementing and gluing machine operators and tenders	71	61	-14%	6.97	6.34	-9%	\$14.10
45-4021	Fallers	59	64	8%	5.64	6.28	11%	\$16.35
51-9011	Chemical equipment operators and tenders	153	119	-22%	5.45	4.56	-16%	\$18.30
51-2011	Aircraft structure, surfaces, rigging, and systems assemblers	116	126	9%	4.97	4.93	-1%	\$19.05
51-9197	Tire builders	56	57	2%	4.96	5.25	6%	\$8.72
53-3099	Motor vehicle operators, all other	199	212	7%	4.48	4.54	1%	\$12.59
51-9051	Furnace, kiln, oven, drier, and kettle operators and tenders	53	43	-19%	4.35	3.71	-15%	\$15.14
51-2021	Coil winders, tapers, and finishers	51	38	-25%	4.28	3.71	-13%	\$12.38
31-1011	Home health aides	2,605	3,327	28%	4.19	4.36	4%	\$9.34
51-6062	Textile cutting machine setters, operators, and tenders	41	27	-34%	4.11	3.38	-18%	\$12.00
51-9041	Extruding, forming, pressing, and compacting machine setters, operators, and tenders	168	150	-11%	3.94	3.30	-16%	\$13.23

51-7042	Woodworking machine setters, operators, and tenders, except sawing	163	161	-1%	3.79	3.58	-6%	\$11.31
51-4061	Model makers, metal and plastic	19	17	-11%	3.61	3.36	-7%	\$13.80
45-4022	Logging equipment operators	76	86	13%	3.60	3.93	9%	\$16.80

Source: EMSI Complete Employment - 1st Quarter 2010

Data Sources and Calculations

Occupation Data

Organizing regional employment information by occupation provides a workforce-oriented view of the regional economy. EMSI's occupation data are based on EMSI's industry data and regional staffing patterns taken from the Occupational Employment Statistics program (U.S. Bureau of Labor Statistics). Wage information is partially derived from the American Community Survey. The occupation-to-program (SOC-to-CIP) crosswalk is based on one from the U.S. Department of Education, with customizations by EMSI.

Location Quotient

Location quotient (LQ) is a way of quantifying how concentrated a particular industry, cluster, occupation, or demographic group is in a region as compared to the nation. It can reveal what makes a particular region unique in comparison to the national average.

State Data Sources

This report uses state data from the following agencies: North Carolina Employment Security Commission, Labor Market Information Division.